

11. Online-Einheit

- Wiederholung K bis , (21 Zeichen)
- Externe Keyer Hardware
- Neues Zeichen V
- Externe Keyer mit Logging/Contesting
- Neues Zeichen G
- Gebeübungen (K,M,U,R,E,S,N,A,P,T,L,W)

Externe Keyer

- Keyer-Elektronik mit Tasten- und PC-Anschluss (USB, seriell)
- Klassische Keyer-Funktion
Iambic, Bug, Ultimatic, Speicher
- CW-Geben aus dem PC
und in den PC (Iambic Master)
- Unterstützung durch Log- und Contestprogramme
- Original, Open Source, Varianten und Klone



Quellen: K1EL Systems, K3NG radioartisan, PUEKEO AliExpress

Link-Liste (Auswahl)

- Original K1EL

<https://www.k1elsystems.com/WKUSBX.html>

- Open Source Variante K3NG

<http://radioartisan.wordpress.com/arduino-cw-keyer/>

- China-Umsetzung der Open Source Variante

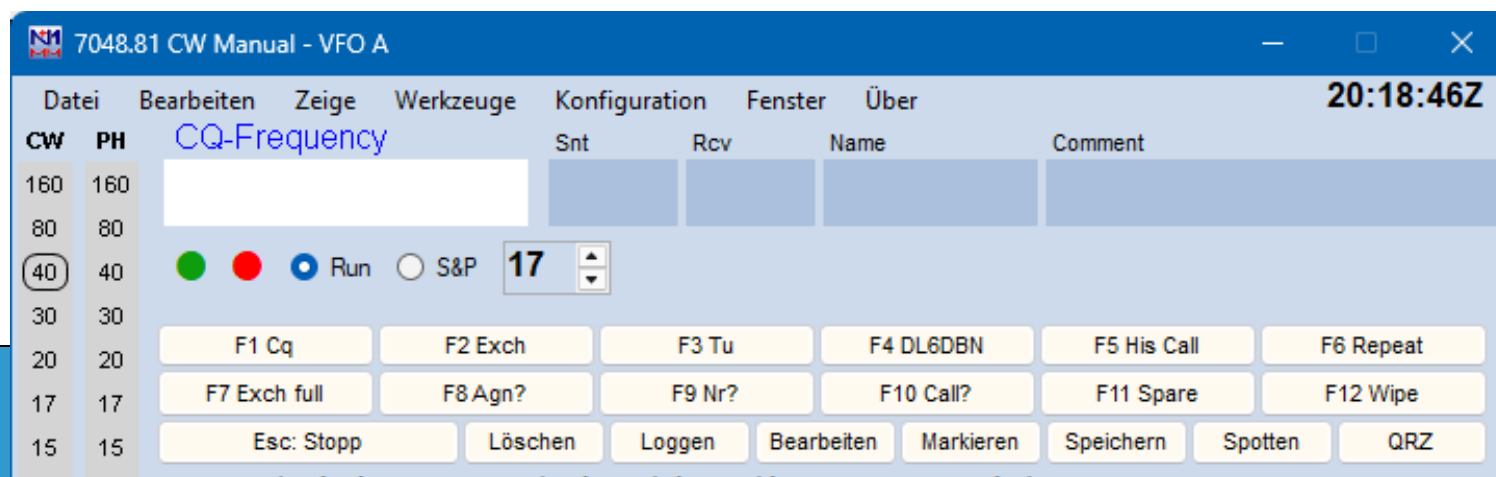
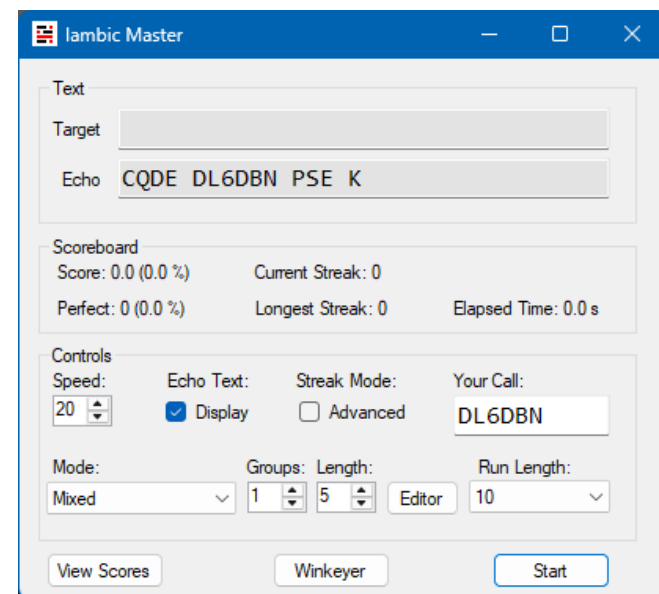
<https://de.aliexpress.com/item/1005005335071085.html>

<https://de.aliexpress.com/item/1005010166730890.html>

<https://de.aliexpress.com/item/1005005270162477.html>

Ext. Keyer und PC-Programme

- Anschluss über USB-Schnittstelle
- Log- und Contestprogramme mit:
- Makros (Speicher) und freier Text
- Automatisch CQ und Rapporte
- z.B. N1MM+, Log4OM u. v. a. m.
- Iambic Master
zum Geben üben mit Keyern



Ext. Keyer und Logger

Keyer interface

RX TX 14170.910 3551000 RX TX 1 Azimuth 0° 180° Elevation 0

CW TEXT GA LBR OM ES DK FER CALL = UR 599 599 IN SIEGEN = NAME FRANK FRANK = BTU

Serial/Paddle echo

Speed 20 SpeedPOT (min) 12 SpeedPOT (max) 30 Direct Type mode TUNE

CALLSIGN S 59 R 59

Operator name Grid Start 30.11.2025 20:12:20 End 30.11.2025 20:12:20

Band 20m Mode USB Country ITU CQ

Comment Note

Freq 14170 910 RX Freq 14170 910 RX Band 20m

Stats (CTRL-F1) Info (CTRL-F2) Awards (CTRL-F3) My (CTRL-F4) Extended (CTRL-F5)

NEW ONE NEW BAND NEW MODE
NEW GRID GRID BAND GRID MODE
Country - Call Band - Call Mode - Call
QSL QSL QSL
EQSL EQSL EQSL
LOTW LOTW LOTW
QRZCOM QRZCOM QRZCOM

PH 160 80 60 40 30 20 17 15 12 10 6 4 V U
CW
DIG

Main (CTRL-F6) Recent QSO's (CTRL-F7) Cluster (CTRL-F8) Macro (CTRL-F9) CW History (CTRL-F10) Macro information Winkeyer Settings

Message 1 CQ CQ DE * K Short desc CQ SHORT TX (F1)
Message 2 CQ CQ DE ** PSE K Short desc CQ LONG TX (F2)
Message 3 ! DE * PSE K Short desc ANSWER TX (F3)
Message 4 ! DE * = UR RST <STTX> <STTX> = NAME IS <NAME> = QTH IS <MY_QTH> = SO HW? BTU K Short desc QSO TX (F4)
Message 5 ! DE * 73 GD DX <NAME> QSL VIA LOTW OR BUREAU * SK Short desc 73 TX (F5)
Message 6 * Short desc CALL TX (F6)
Message 7 SNN Short desc 599 TX (F7)
Message 8 Short desc TX (F8)
Message 9 Short desc TX (F9)
Message 10 Short desc TX (F10)
Message 11 Short desc TX (F11)
Message 12 Short desc TX (F12)

[<MY_CALL> OR *] [<CALL> OR !] [<STRX>] [<STRXF>] [<STTX>] [<STTXF>] [<NAME> OR <MY_NAME>] [<HIS_NAME>]
[<COUNTRY>] [<GRID>] [<MY_IOTA>] [<MY_SOTA>] [<MY_OPCALL>] [<MY_QTH>] [<MY_ANTENNA>] [<MY_RIG>]
[<CONT_TX>] [<TEMP_C>] [<TEMP_F>] [<PRESSURE_MMHG>] [<PRESSURE_HP>] [<WIND_DIR>] [<WIND_SPD_KMH>]

Disconnected Closed | Current macro file: defaultMacro.txt Keyer engine: Winkeyer